

The Ashtons logo is displayed in white text on a dark blue rectangular background in the top right corner of the image. The word "Ashtons" is written in a clean, sans-serif font, with a green leaf-like graphic element integrated into the letter 'A'.

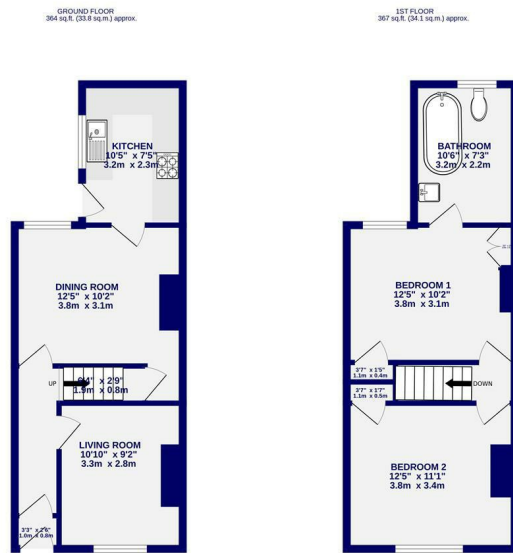
77 Sutherland Street YO23 1HG

£1,000 PCM



A two bedroom terraced house in the popular Southbank area. Offered for let on an unfurnished basis. The accommodation comprises of entrance hallway; front reception room; rear reception room; kitchen with gas hob, electric oven, fridge and space / plumbing for washing machine ; two double bedrooms; house bathroom accessed off of rear bedroom so not suitable for sharers. Externally there is a rear yard with a brick store. On street permit parking.

Available 10 June 26 / Deposit £1100 / Council Tax Band B / EPC Rating D



77 SUTHERLAND STREET  
TOTAL FLOOR AREA: 731 sq ft (67.9 sq m) approx.  
While every attempt has been made to ensure the accuracy of the floorplan, measurements of rooms and any other areas are approximate. It should be noted that the dimensions are for general guidance only. All dimensions are approximate. It should be noted that the dimensions are for general guidance only. All dimensions are approximate. It should be noted that the dimensions are for general guidance only. All dimensions are approximate.



High Petergate Letters



01904 731404



lettings@ashtonsnet.com

